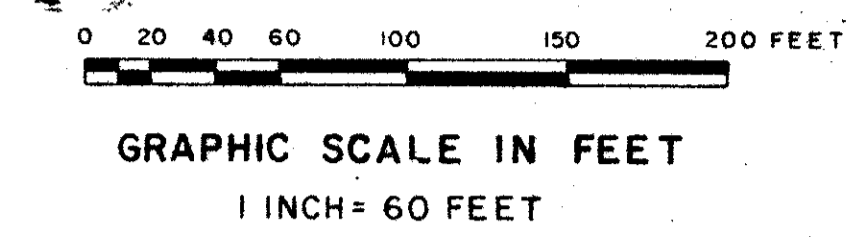
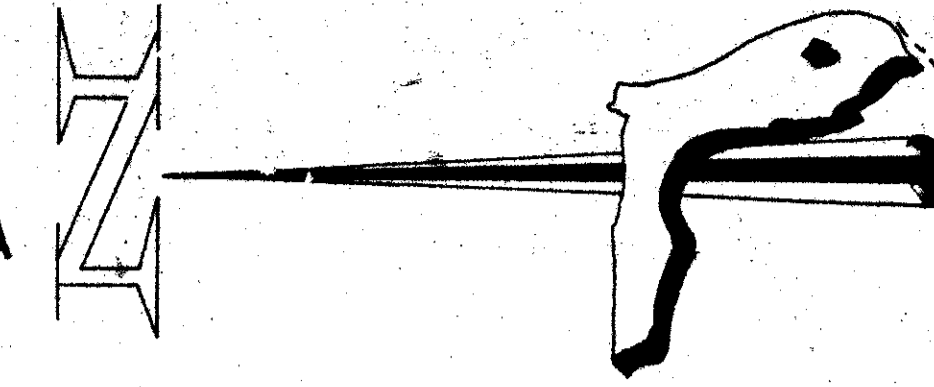


47/7

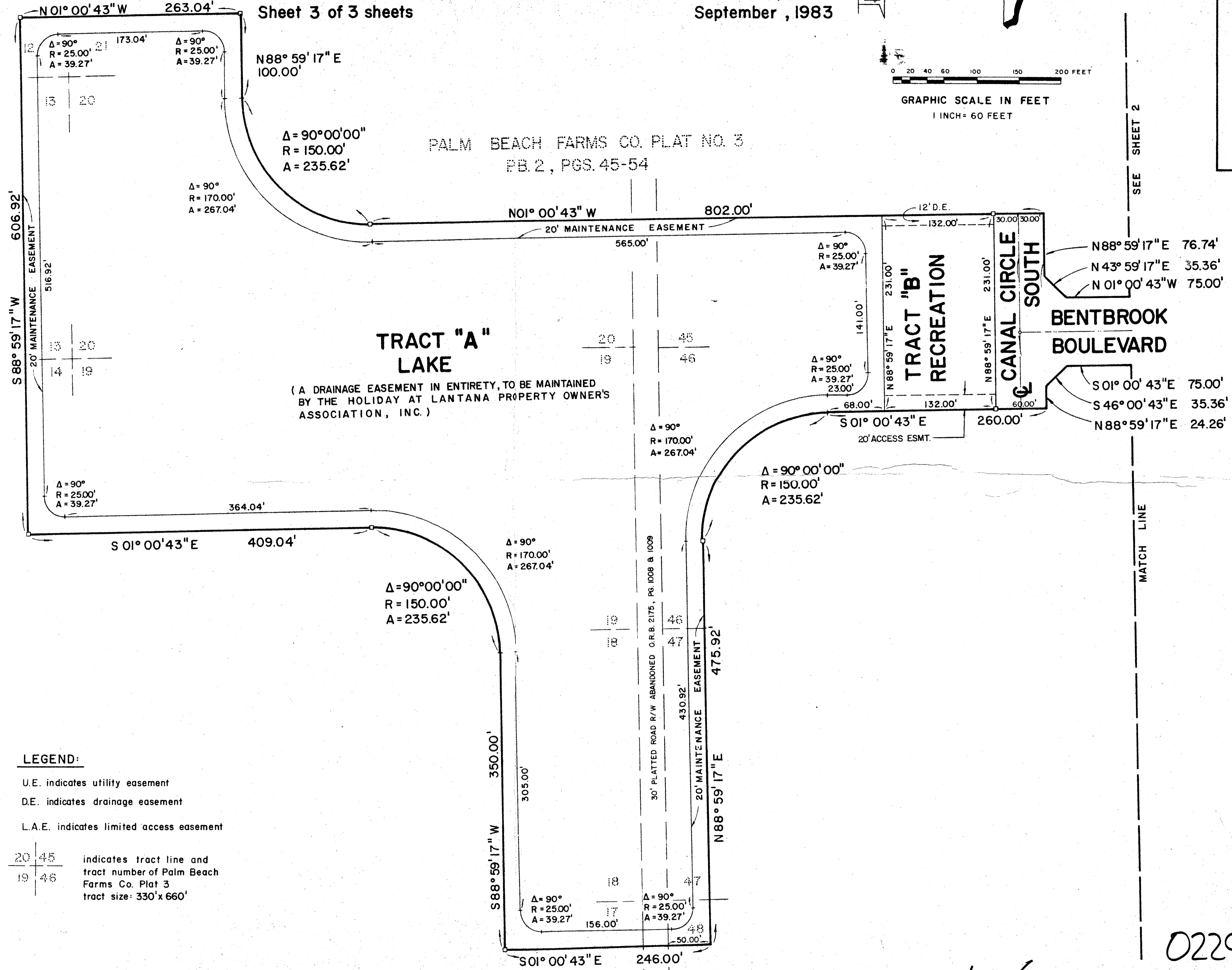
7

# COUNTRYWOOD PLAT NO. 3

LYING IN SECTION 33, TWP. 44 S., RGE. 42 E., PALM BEACH CO., FLORIDA  
 Sheet 3 of 3 sheets  
 September, 1983



PALM BEACH FARMS CO. PLAT NO. 3, P.B. 2, PGS. 45-54



**LEGEND:**

U.E. indicates utility easement  
 D.E. indicates drainage easement  
 L.A.E. indicates limited access easement

20 45 indicates tract line and tract number of Palm Beach Farms Co. Plat 3  
 19 46 tract size: 330' x 660'

SEE SHEET 2

MATCH LINE

PALM BEACH FARMS CO. PLAT NO. 3, P.B. 2, PGS. 45-54

47/7

0229-300

FLORIDA SURVEYING & MAPPING, INC.	
REGISTERED LAND SURVEYORS	
WEST PALM BEACH, FLORIDA 33406	
SCALE	NOTED
DATE	JUNE '83
RD. FILE	
P.B.	PG.
COUNTRYWOOD PLAT NO. 3	
183-6	
Sheet	